

Kerlink and DataLong16 Will Demonstrate Asset-Tracking System in Port of Barcelona at MWC

Pilot Project Allows Port Managers to Dispatch Closest Maintenance Crews for Urgent Facility Repairs in Real Time



PRESS RELEASE

Thorigné-Fouillard, France and **Barcelona, Spain** – Feb. 21, 2018, 6:00 p.m. CET – **Kerlink** (ALKLK - FR0013156007), a specialist and global leader in solutions dedicated to the Internet of Things (IoT), and **DataLong16**, a leader in asset-monitoring solutions, today announced the pilot deployment of an IoT network in the Port of Barcelona to help port authorities track and dispatch maintenance personnel in the port.

In addition to determining the exact location of the 10 vehicles in the port's maintenance fleet in real time, the application will enable authorities to respond to calls for urgent repairs to facilities and equipment by sending personnel who are closest to the scene of the problem to make repairs.



The LPWAN Development Kit from Flex

Kerlink is providing its [Wanesy™ Management Center](#) to power the LoRa® core network, its [Wirnet™ iBTS Compact LoRaWAN™ gateways](#) to cover the entire area, and its [Wanesy™ Geolocation](#) solver to provide geographic coordinates. The fleet monitoring system uses the LPWAN Development Kit from Flex, the Sketch-to-Scale™ solutions provider that designs and builds Intelligent Products for a Connected World™, embedded in maintenance vehicles and communicating over the network to enable geolocation. DataLong16 is designing and operating the application software to map the vehicles' status, locate the mission and route the nearest repair team on the spot.

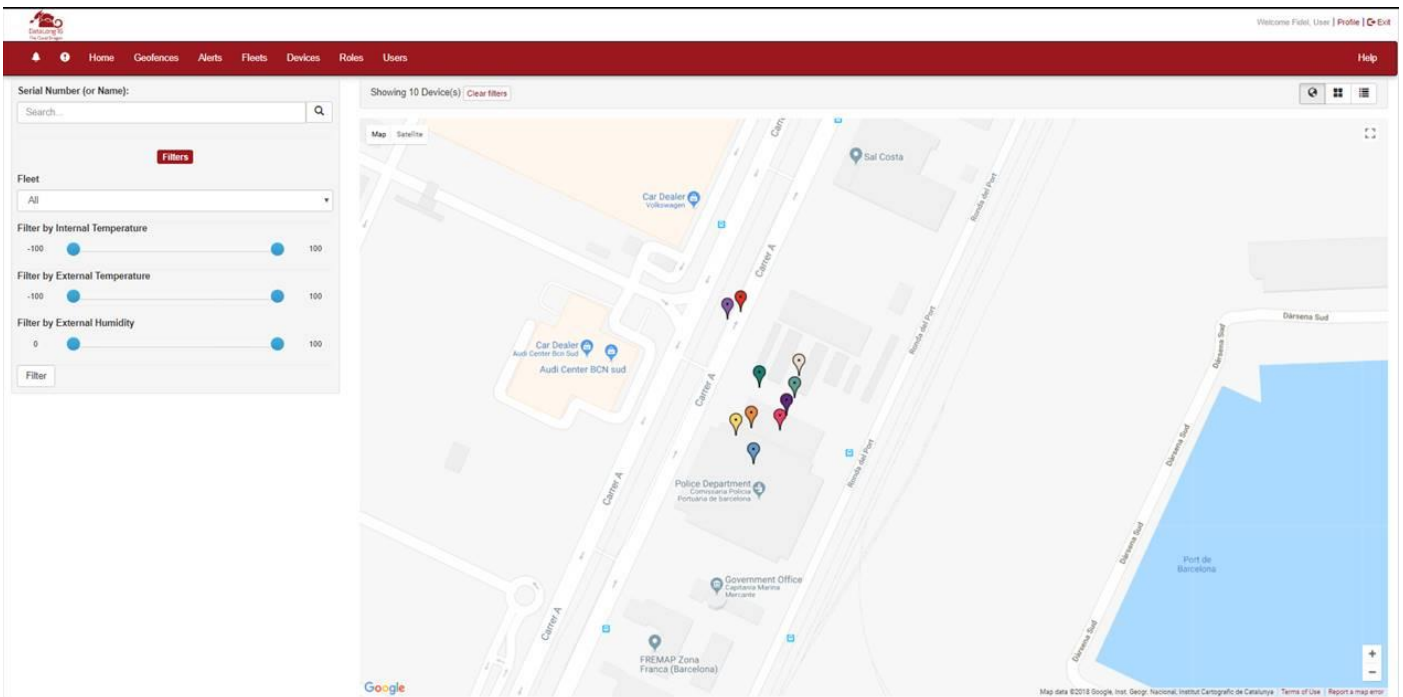
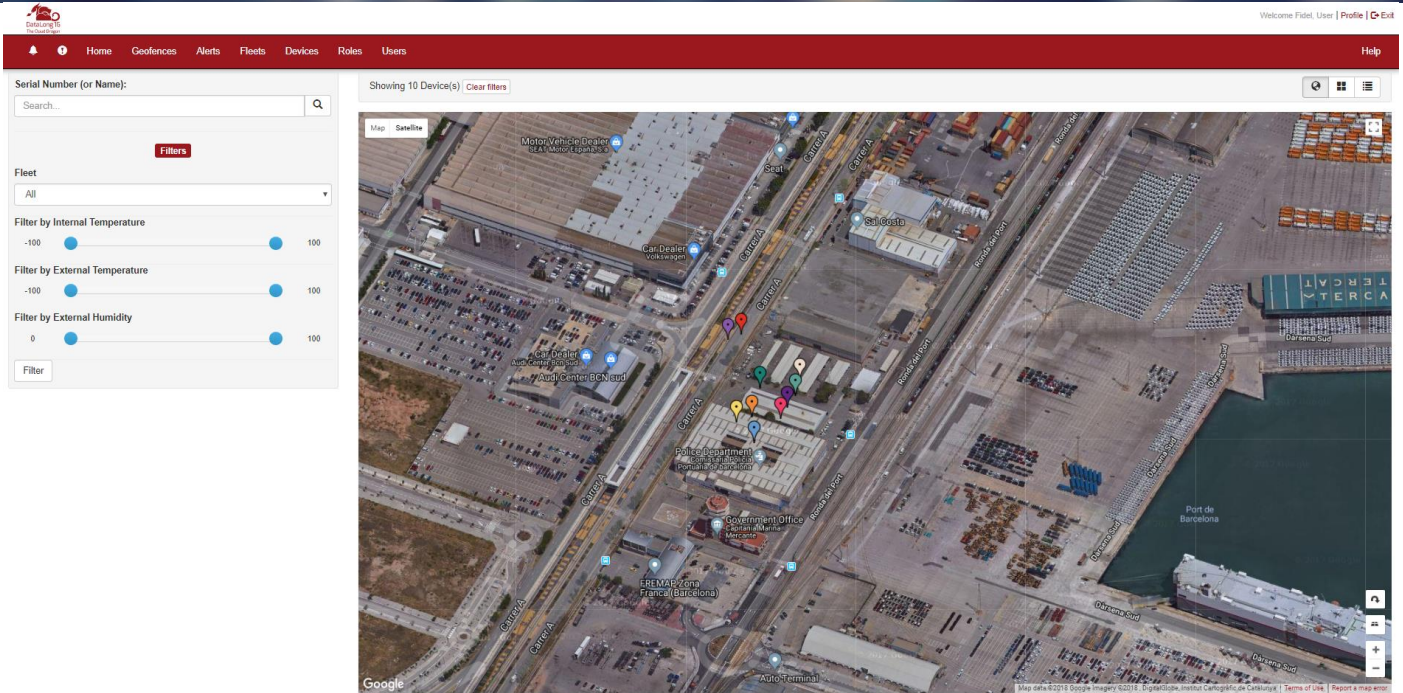
Kerlink and DataLong16 will demonstrate this solution during **Mobile World Congress** at [Kerlink's booth \(8.0 C11\)](#), February 26 to March 1.

"LoRa® offers a longer application range at lower power consumption than competing technologies and was ideal for our bi-directional IoT communication and monitoring applications, including geolocation," said Miquel Delamano, DataLong16 IoT network director. "Furthermore, the data is natively encrypted, assuring secure transmission. Working with Kerlink in a rapidly expanding IoT market will help us offer our customers, such as the Port of Barcelona, connectivity solutions to effectively manage assets and improve their fleet operations."

"Like IoT network deployments in smart cities where Kerlink's equipment is used to track assets, DataLong16's system in the Port of Barcelona will immediately provide the port operator with insights of how their maintenance fleet is used and ways to make it more efficient," said Virginie Bonnot, Kerlink Advanced Services business unit sales director.

Kerlink and DataLong16 Will Demonstrate Asset-Tracking System in Port of Barcelona at MWC

Pilot Project Allows Port Managers to Dispatch Closest Maintenance Crews for Urgent Facility Repairs in Real Time



DataLong16 user interface for asset tracking

Kerlink and DataLong16 Will Demonstrate Asset-Tracking System in Port of Barcelona at MWC

Pilot Project Allows Port Managers to Dispatch Closest Maintenance Crews for Urgent Facility Repairs in Real Time

About Kerlink Group

Kerlink Group is a global leading provider of end-to-end network solutions for the Internet of Things (IoT), serving telecom operators, businesses and public authorities worldwide. Its growing suite of turnkey IoT services includes network planning, design and operational management that maximizes performance of its market-leading, carrier-grade infrastructure offering. The Group, widely recognized for its IoT expertise, also continually introduces innovative value-added services, such as network-based geolocation, remote end-device management and low-power IoT reference design, which allows its customers to quickly bring to market IoT-ready devices and to imagine innovative business models to monetize their deployments.

In just over 10 years, more than 100,000 Kerlink installations have been deployed in more than 69 countries. In 2017 Kerlink supplied more than 330 customers, including major telecom operators such as Tata Communications, and service providers such as GrDF and Suez. The company's solutions are enabling IoT networks worldwide with major deployments in Europe, South Asia, South America and Oceania. Kerlink, a co-founder and board member of the LoRa Alliance™, has invested more than €10 million in research in the past three years. In 2017, Kerlink Group generated revenues of nearly €25 million, more than 50 percent internationally. Since 2013, it has posted average annual growth of more than 62 percent. It has been listed on Euronext Growth Paris since May 2016 and was added to the EnterNext PEA-PME 150, an index of 150 fast-growing French SMEs, in 2017. For more information, visit www.kerlink.com or follow us on Twitter @kerlink_news.

About DataLong16

DataLong16 is an innovative supply chain and asset visibility company offering solutions addressing a broad portfolio of challenges. We help develop great experience for clients, where they can stay connected with their assets in real-time. Our solution, which is connected to the "Internet of Things", is serving several vertical industries, such as; pharma, agri-food, medical, chemical, laboratories, transportation, ... All of them strongly related to logistics and distribution. We form part of the IATA Strategic Partnerships Program, which is a platform for aviation solution providers to build as well as strengthen relationships with key industry stakeholders. As active members, we help clients stay current with today's requirements and prepare for tomorrow's.

For more information visit <http://www.datalong16.es/>

Kerlink and DataLong16 Will Demonstrate Asset-Tracking System in Port of Barcelona at MWC

Pilot Project Allows Port Managers to Dispatch Closest Maintenance Crews for Urgent Facility Repairs in Real Time



Upcoming events

2017 Annual Results: 4 April 2018 after market

www.kerlink.com



DataLong16 Press contacts:

Spain

Sergi Bueno
+34 936 116 050

s.bueno@datalong16.com

International

Cornel Pandrea
+34 936 116 050

c.pandrea@datalong16.com



Kerlink's Investor contact:

Actifin

Benjamin Lehari
+33 (0)1 56 88 11 25

blehari@actifin.fr

Kerlink's Financial Press

contact:

Actifin

Isabelle Dray
+33 (0)1 56 88 11 29

idrayer@actifin.fr



Kerlink's Press and Market Analysts contact:

Mahoney Lyle
Céline Gonzalez
+33 (0)6 75 85 60 42

cgonzalez@mahoneylyle.com



www.kerlink.fr



fr.linkedin.com/company/kerlink



[@kerlink_news](https://twitter.com/kerlink_news)