



# LORAWAN<sup>®</sup> AND NB-IOT: COMPETITORS OR COMPLEMENTARY?

**ABI**research  
for visionaries

 **LoRa Alliance**<sup>™</sup>

## Introduction

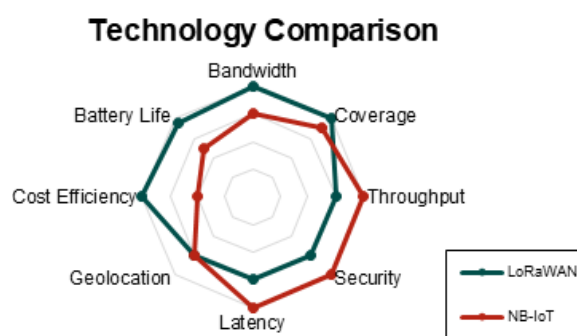
Low-Power Wide-Area (LPWA) technologies are serving a need in multiple IoT markets for devices that are low cost and sustain long battery life, and networks that are low cost, cover wide areas, and can support massive numbers of connections. There are several options for LPWA connectivity, but LoRaWAN and NB-IoT have shown the most momentum and will garner the largest share of the LPWA market in the coming years. This whitepaper will examine the two technologies for their similarities and differences. It will transition to a discussion of LoRaWAN use in several vertical markets, highlighting LoRaWAN's unique benefits. The whitepaper will conclude with the potential use cases where both LoRaWAN and NB-IoT will operate together to provide the greatest value for customers.

## Technical Comparison of LoRaWAN and NB-IoT

LoRaWAN is an open LPWAN system architecture developed and standardized by the LoRa Alliance<sup>™</sup>, a non-profit association of more than 500 member companies. LoRa is the modulation technique used in the physical layer that enables long-range low-power communications by using Chirp Spread Spectrum (CSS) modulation, which spreads the narrowband signals across a wider channel allowing greater interference resilience and low signal-to-noise ratio levels. NB-IoT, on the other hand, operates in the licensed spectrum, and like LTE, uses Frequency Division Multiple Access (FDMA) in the uplink, Orthogonal FDMA (OFDMA) in the downlink, and Quadrature Phase Shift Keying (QPSK) modulation. While both technologies can compete on Quality of Service (QoS), IoT applications that require more frequent communications will be better served by NB-IoT, which has no duty cycle limitations operating on the licensed spectrum, but at the expense of higher Total Cost of Ownership (TCO) relative to LoRaWAN.

Technology Parameters	LoRaWAN	NB-IoT
Bandwidth	125 kHz	180 kHz
Coverage	165 dB	164 dB
Battery Life	15+ years	10+ years
Peak Current	32 mA	120 mA
Sleep Current	1µA	5µA
Throughput	50 Kbps	60 Kbps
Latency	Device Class Dependent	< 10 s
Security	AES 128 bit	3GPP (128 to 256 bit)
Geolocation	Yes (TDOA)	Yes (in 3GPP Rel 14)
Cost Efficiency (Device and Network)	High	Medium

Source: ABI Research



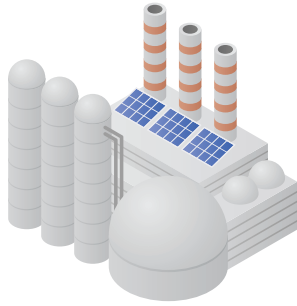
Both LoRaWAN and NB-IoT end devices have lower power consumption by shifting to sleep mode when not in operation. As a synchronous protocol, NB-IoT consumes significantly more energy than LoRaWAN, which is an asynchronous protocol, and when measured on the same data throughput, NB-IoT consumes higher peak current required for OFDM/FDMA modulation. Regardless, the characteristics of these two technologies are critical for many application segments that require deep indoor coverage and years of battery life.

Enterprise customers looking to deploy a hybrid network using both private and public network infrastructure are best served by LoRaWAN for multiple reasons. With private LoRaWAN networks, enterprises are not restricted due to business and cost constraints by data transmissions. Where available, campus network access can be augmented with a public LoRaWAN network. NB-IoT connectivity is currently offered in areas that already have cellular coverage, but relative to LoRaWAN, deployment costs are higher because private network deployments will require acquisition or leasing of RF spectrum from network operators. Another factor affecting relative cost and performance between LoRaWAN and NB-IoT is that LoRaWAN has demonstrated better indoor penetration capabilities. The Maximum Coupling Loss (MCL) for both uplink and downlink of LoRaWAN is 165 dB; the NB-IoT MCL value can be from 145 dB to 169 dB for uplink and 151 dB for downlink based on the device class. The lower link budget of NB-IoT also reduces battery life.

## More LoRa Devices Than NB-IoT

As of April 2019, worldwide there are more than 113 LoRaWAN networks in 55 countries at various stages of commercial deployment, according to the LoRa Alliance, compared to 90 NB-IoT networks. According to the LoRa Alliance, there are 118 LoRaWAN devices that are certified by the LoRa Alliance. This compares to a total of 43 commercial NB-IoT and CAT-M devices, as reported by the Global Mobile Suppliers Association. According to Semtech Corporation, as of April 2019, the cumulative number of LoRa end nodes reached 97 million. LoRaWAN solution growth is accelerating because the device ecosystem has been rapidly expanding to address a broader set of vertical markets.

# Utilities



LoRaWAN has been predominantly strong with utilities connecting smart meters for gas and water utilities. China has been an early adopter of LoRa connectivity technology for smart metering projects, accounting for nearly 65% of chips shipped in 2018. Birdz, a subsidiary of Novo Veolia and Veolia Water, announced on December 19, 2018, that it had chosen Orange Business Services (OBS) to connect 3 million LoRaWAN smart water meters. Veolia's contract is the largest smart water meter implementation using a public LPWA network. Energy utilities that are in more advanced stages of their smart meter deployments are now turning to modernize their Medium-Voltage (MV) and High-Voltage (HV) electrical infrastructure. ABB, a leader in electrification solutions, announced the availability of LoRaWAN surge arresters that measure excess voltage discharge current and leakage current. The LoRa Alliance and the DLMS association jointly announced in April 2019 their cooperation to deliver a new DLMS profile adapted for LoRaWAN networks, enabling many IoT applications to be used by utilities and allowing the use of DLMS/COSEM for connecting smart electricity meters with LoRaWAN.

# Smart Buildings



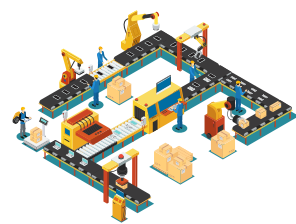
IoT solutions using sensors to monitor multiple environmental conditions such as temperature, humidity, and light intensity, and detect motion, shock, and water leaks are increasingly used in commercial buildings. Smart buildings are also incorporating office space management solutions that use room sensors to provide real-time information on occupancy for access to desk space and conference rooms, and optimal usage of HVAC systems. Occupancy knowledge can also help building facility managers more efficiently manage soft services such as cleaning, waste management, and security. LoRaWAN technology has had the most success in enabling these use cases and benefits because of the availability of devices and ease of creating in-building networks with deep indoor penetration. Intelligent edge gateway vendors such as Cisco, MultiTech, Kerlink, TEKTELIC, and Laird all provide micro and femto gateways that support from 3,000 to 7,000 end-point connections respectively.

# Logistics/Asset Tracking



Wirelessly tracking enterprise assets is one of the biggest opportunities in the industrial IoT market, and LPWA network technologies will play a major role by cumulatively tracking more than 9,500 million assets worldwide in the next 5 years. The biggest challenge that LoRaWAN can solve is visibility and traceability of assets across a larger portion of the supply chain that extends from indoor environments to yard environments and even across metropolitan areas and regions using a single technology. Currently, visibility to assets is only available either indoors using short-range wireless technologies such as RFID, Bluetooth, UWB, or Wi-Fi, or outdoors with cellular or satellite technology. On February 19, 2019, an aircraft manufacturer chose Objenious for its hybrid LoRaWAN infrastructure, allowing it to track assets not only within its factories but also between factory locations using the Objenious public LoRaWAN network. Another example is asset tracking systems that track vehicles transporting high-value assets. In Brazil, Maxtrack chose LoRaWAN, and by the end of 2018, has deployed more than 400,000 trackers for vehicle and cargo tracking.

# Industrial and Smart Manufacturing



One of the key enablers of digital transformation in manufacturing is the Industrial Internet of Things. LoRaWAN-certified sensors help enable IoT applications in manufacturing to improve visibility on production flow, monitor machine health to reduce downtime, view asset utilization, and study overall operational efficiency. Industrial IoT applications benefit from LoRaWAN's low network TCO and flexibility to operate private networks to deploy wireless sensors to collect additional data points to deliver new insights. Industrial solutions from Ineo-Sense and ADVEEZ have witnessed early adoption in the automotive and aerospace industry.

# Smart Agriculture



According to the Food and Agriculture Organization (FAO) of the United Nations, the agriculture industry will need to increase its production growth by 70% by 2050 to meet the demand of the forecasted population growth. IoT technologies will contribute to better use of resources to meet this forecasted food demand. However, falling commodity prices have made it difficult for a large block of producers, small- and medium-sized farm owners, to afford IoT technologies. LPWA network technologies enable the adoption of affordable IoT solutions in two ways: first, the availability of low-cost devices for monitoring soil moisture or livestock condition to improve crop yield or dairy yield; and second, the creation of affordable WAN networks to collect sensor data from LoRaWAN-certified devices in place of cellular networks that may not be available. As noted earlier, there are multiple vendors offering gateways to build private LoRaWAN networks.

Finally, in addition to LoRaWAN's early success in enterprise applications, ABI Research also foresees significant adoption in consumer applications, like in the smart home. LoRaWAN supports both deep indoor and long-range outdoor connectivity for devices located in the perimeter of the property. Furthermore, LoRaWAN's battery efficiency is essential for many battery-operated sensor devices used in applications such as smoke detectors, water leak detection, smart locks, monitoring environmental conditions, elder care, and outdoor smart lighting. ABI Research also believes that B2B use cases will benefit from smart home-based LoRaWAN networks because this extension of network availability into the home supports a wide range of use cases relevant to enterprise customers including shipment delivery verification, security, and safety monitoring.

## Opportunities for LoRaWAN and NB-IoT to Co-Exist

As the IoT market continues to evolve, LoRaWAN and NB-IoT will co-exist in the market by competing in some vertical markets and complementing in other verticals based on cost, coverage, and bandwidth requirements of various IoT use cases. Using unlicensed spectrum, LoRaWAN will remain differentiated among LPWA network technologies and will play a leading role in enterprise private networks where enterprises want complete control over their infrastructure and devices. However, there are three use cases that could create the need for hybrid applications using both LoRaWAN and NB-IoT.



The first use case is tracking mobile assets. As LoRaWAN and NB-IoT network footprints continue to grow globally, the networks can also be complementary, delivering the ubiquitous connectivity necessary to track assets across multiple locations and regions.



The second use case is in utilities smart metering and grid monitoring applications. In Europe, Wireless M-Bus, an ETSI standard for smart metering applications, has been predominantly used in smart gas and water metering. However, Wireless M-Bus faces a shrinking supply chain of solution vendors that support the standard. This puts LoRaWAN as a potential replacement for WAN connectivity to battery-operated smart meters. Additionally, for metering implementations that use a gateway architecture, as seen in the United Kingdom and Germany, LoRaWAN can connect meters and other end points.



Finally, industrial equipment OEMs implementing remote monitoring solutions can greatly benefit from a combo LoRaWAN/NB-IoT connectivity solution to increase both functionality and flexibility for diverse industrial monitoring and control applications. LoRaWAN technology, optimized for longer battery life, can be used as the primary connectivity solution when sensors are required to send monitoring data more frequently. NB-IoT technology, with its lower latency and guaranteed QoS but greater cost, can be used less frequently for specific remote-control applications.

## Summary

The network rollouts for both LoRaWAN and NB-IoT are relatively recent but are witnessing rapid growth at a global scale. There will be a place for both LoRaWAN and NB-IoT for massive IoT applications based on the benefits of lower costs for devices, network infrastructure, and network access; deep in-building coverage; and low power consumption. In the near term, however, LoRaWAN has a clear advantage over NB-IoT, with a mature ecosystem of vendors, certified IoT devices, and end-to-end solutions that are ready for implementation today.

---

---

**Published June 10, 2019**

©2019 ABI Research  
249 South Street  
Oyster Bay, New York 11771 USA  
**Tel: +1 516-624-2500**  
[www.abiresearch.com](http://www.abiresearch.com)

---

---

#### **About ABI Research**

ABI Research provides strategic guidance for visionaries needing market foresight on the most compelling transformative technologies, which reshape workforces, identify holes in a market, create new business models and drive new revenue streams. ABI's own research visionaries take stances early on those technologies, publishing groundbreaking studies often years ahead of other technology advisory firms. ABI analysts deliver their conclusions and recommendations in easily and quickly absorbed formats to ensure proper context. Our analysts strategically guide visionaries to take action now and inspire their business to realize a bigger picture. For more information about ABI Research's forecasting, consulting and teardown services, visionaries can contact us at +1.516.624.2500 in the Americas, +44.203.326.0140 in Europe, +65.6592.0290 in Asia-Pacific or visit [www.abiresearch.com](http://www.abiresearch.com).

© **2018 ABI Research**. Used by permission. ABI Research is an independent producer of market analysis and insight and this ABI Research product is the result of objective research by ABI Research staff at the time of data collection. The opinions of ABI Research or its analysts on any subject are continually revised based on the most current data available. The information contained herein has been obtained from sources believed to be reliable. ABI Research disclaims all warranties, express or implied, with respect to this research, including any warranties of merchantability or fitness for a particular purpose.