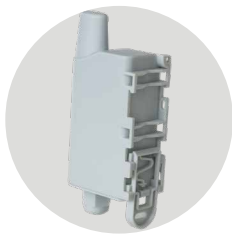
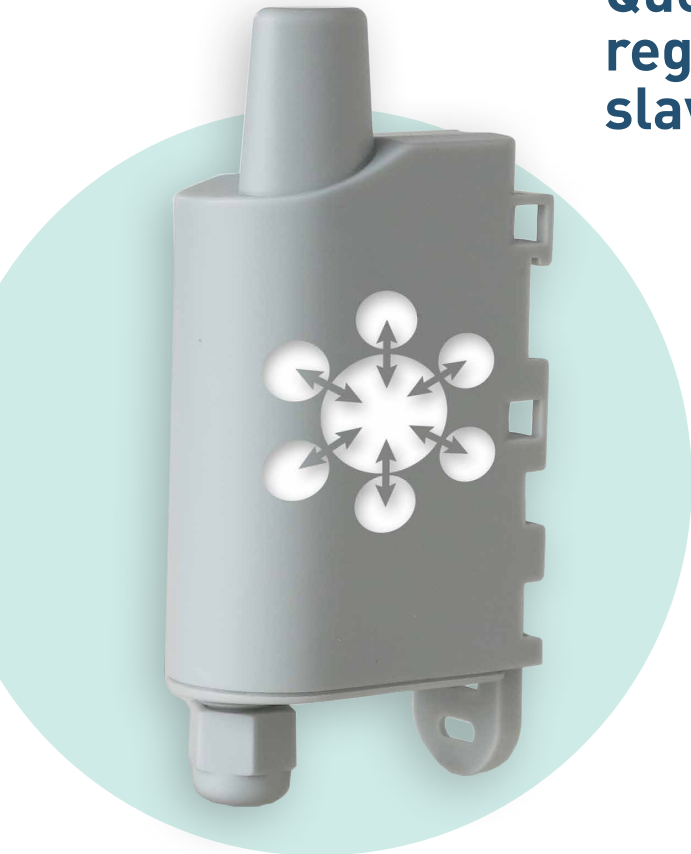


# MODBUS - 2

Query, write and read one or more registers on one or more Modbus slaves



ALERT

- Provide feedback about faults and alerts from Modbus slaves



MEASURE

- Provide feedback about measuring data from Modbus slaves



ACT

- Reading a slave's registers from the network
- Write to a slave's registry from the network

## BENEFITS

- RS485/RS232 compatible
- Supervision of up to 20 slaves
- Several periodic frames with different frequencies
- Indicator lights for installation assistance
- Control and supply of power to the sensor
- Local and remote configuration

### FUNCTION

Modbus interface



# PRODUCT USES

---



Make your thermal energy meters communicate.



Broadcast information on PLC.

## TECHNICAL SPECIFICATIONS

---

- Periodic modes or event-based modes
  - 6 configurable periodic frames
    - 6-30V external power supply
  - Dimensions: 105 x 50 x 27 mm
  - Casing: IP67 (IP68 on request)
- Integrated fastening system: DIN rail, tube, wall, flange
- CLASS C or CLASS A LoRaWAN as desired
  - Configurable Life Screen
  - Enable "Word Swap"
- Repeation of an alarm
- Modbus specific help in the IoT Configurator
  - Zone: Sigfox: RC1 / LoRaWAN: EU863-870 / WM-Bus: 868 on demand (MoQ)
- Operating temperature range: -25°C / +70°C
  - Weight: 70g
- Standards: Directive 2014/53/EU (RED)
- Product error alert, configuration error, low battery

