

# Area 8c

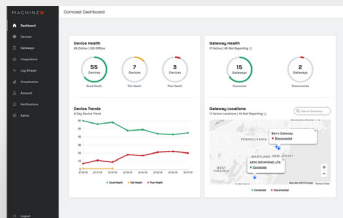
8-CHANNEL LoRa® INDOOR GATEWAY



The Area 8c provides optimal coverage and reliable connectivity for small and large scale, indoor deployments.

Two models available to support your backhaul requirements:

ETHERNET | LTE CELLULAR/ETHERNET



## MachineQ Enterprise Platform License

Utilize MQcentral and our robust APIs to manage critical over-the-air-updates and check the general health of your deployments.

## Easy, Flexible and Cost-Efficient

Built and tested in-house by our LoRaWAN® experts, the MachineQ Area 8c gateway can process millions of transmissions per day and support up to 10,000 devices. The Area 8c offers superior long-range capacity and deep propagation to hard-to-reach places.

Activation is made simple through the MachineQ mobile app. The Area 8c's compact size and multiple backhaul options add flexibility for placement. The unit can be mounted on walls or tables and includes an optional external antenna to optimize range.

## Features & Capabilities

- RF optimized and certified for best-in-class propagation reducing hardware expenditure
- Supports up to 10,000 devices ensuring all sensor data is received and processed
- Edge enablement: ability to decode LoRa payloads locally and transmit directly from the Area 8c
- Automated failover logic and payload caching help to reduce loss of data due to outages
- End-to-End Encryption - encryption from sensor to gateway, plus sensor payloads and wireless metadata

## Partner With Us

To learn more, contact us at [info@MachineQ.com](mailto:info@MachineQ.com) or visit [MachineQ.com](http://MachineQ.com).

## PRODUCT SHEET

# Area 8c

## 8-CHANNEL LoRa® INDOOR GATEWAY

### TECHNICAL SPECIFICATIONS

#### LoRa TX POWER

+27 dBm

#### POWER

AC/DC 100-240VAC 50/60Hz  
to 12VDC/2A

#### LEDS AND BUTTONS

4 LEDs: Power, Ethernet,  
LTE/Wi-Fi, LoRa

#### ANTENNAS

Wi-Fi: Internal

LoRa®: Internal & External

#### WHATS IN THE BOX

Gateway, AC Adapter,  
RJ45 Ethernet Cable,  
External Antenna, Wall  
Mounting Hardware

#### LoRa

US 915 Mhz

#### LoRa RECEIVE SENSITIVITY

Typical -133 dBm @ SF12, 125KHz

#### CHANNELS

8

#### DUPLEX

Half

#### INSTALLATION LOCATIONS

Indoor only

Operating: 0 ~ 40°C

Storage: -10 ~ 70°C

#### MEMORY

1024Mbit RAM

#### MODEL NUMBERS

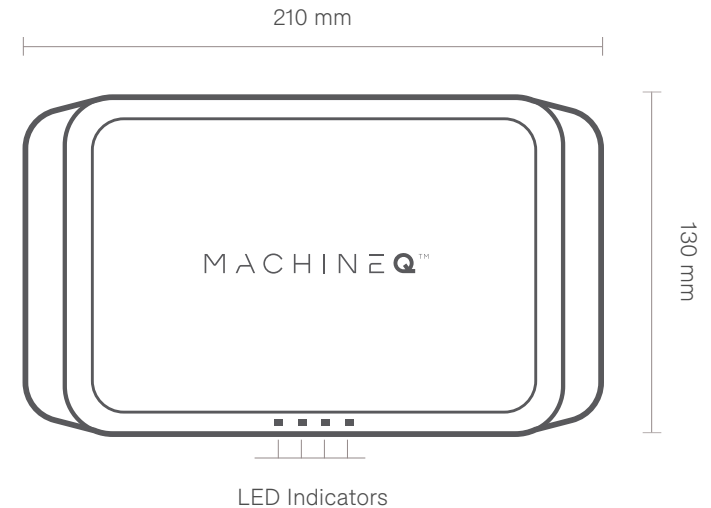
LTE Backhaul: HXQX1AP0S

Wi-Fi Backhaul: HXQX1AM0S

## HARDWARE SPECIFICATIONS

### DIMENSIONS

210 mm x 130 mm x 33 mm



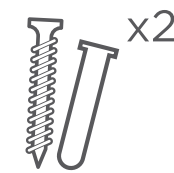
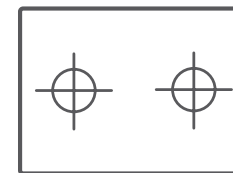
A-C Adapter



Antenna



Ethernet



Wall  
Mounting  
Hardware

For EU868, AS923 and other international deployments, please contact [info@MachineQ.com](mailto:info@MachineQ.com) for more details.