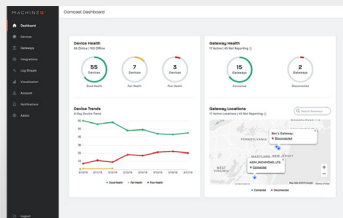


Field 64c

64-CHANNEL LoRa® OUTDOOR GATEWAY



Experience reliable, scalable connectivity for long-range outdoor deployments.



MachineQ Enterprise Platform License

Use MQcentral and our robust APIs to manage your network and easily deploy solutions at scale.

Greater Coverage, Fewer Access Points

Gather and transmit data at scale with the MachineQ Field 64c gateway, a high capacity LoRaWAN® gateway for wide area deployments.

The Field 64c includes all of the outdoor-hardening and software features of the Field 16c with 64 channels of LoRaWAN connectivity.

Through antenna diversity and optimized RF components, the Field 64c supports hundreds of thousands of connected devices, providing superior scalability.

Features & Capabilities

- High-availability, carrier-grade design with the support of in-service configuration and software updates
- Durable in harsh environments, with IP67-rated casing, operational in temperatures that range from -40°C to +55°C
- Full duplex operation making all receive and transmit channels available simultaneously
- Excellent isolation between the Tx and Rx bands, as well as out-of-band rejection of Cellular and Paging networks
- Supports millions of uplinks per day ensuring all sensor data is received and processed
- Easy to deploy, supporting different backhaul options (Cellular/Ethernet)
- Fully integrated with the MachineQ platform for seamless operation

Partner With Us

To learn more, contact us at info@MachineQ.com or visit MachineQ.com.

PRODUCT SHEET

Field 64c

64-CHANNEL LoRa® OUTDOOR GATEWAY

TECHNICAL SPECIFICATIONS

TX POWER

2 x 1W (2 x 30 dBm)

POWER

PoE++ (802.3bt)

INTERFACES

Ethernet Backhaul: RJ-45

GPS: N-Type

Cellular Backhaul (3G/4G):

N-Type (Optional)

LoRa Antenna (2 parts): N-Type

(2nd Port Optional)

CHANNELS

64

CONNECTIVITY

LoRa®, Ethernet, 3G/4G, GPS

DUPLEX

Full

INSTALLATION LOCATION

Outdoor

OPERATING TEMPERATURE

-40°C to +55°C (-40°F to +131°F) at sea level including solar loading

OPERATIONAL HUMIDITY

10% to 100% condensing

SAFETY

UL 60950-1 (US/C)

REGULATORY

FCC Part 15.247, 109, 209

ETSI EN 300 019-2-1, 300 019-2-2

ETSI EN 300 019-2-3, 300 019-2-4

WHAT'S IN THE BOX

Field 64c

Mounting Bracket

Ethernet Weatherproofing Adapter

Internal GPS antenna

Internal Cellular Antenna

SOLD SEPARATELY

PoE Injector

LMR400 Antenna Cable

External LoRa® antenna

Pole mounting kit

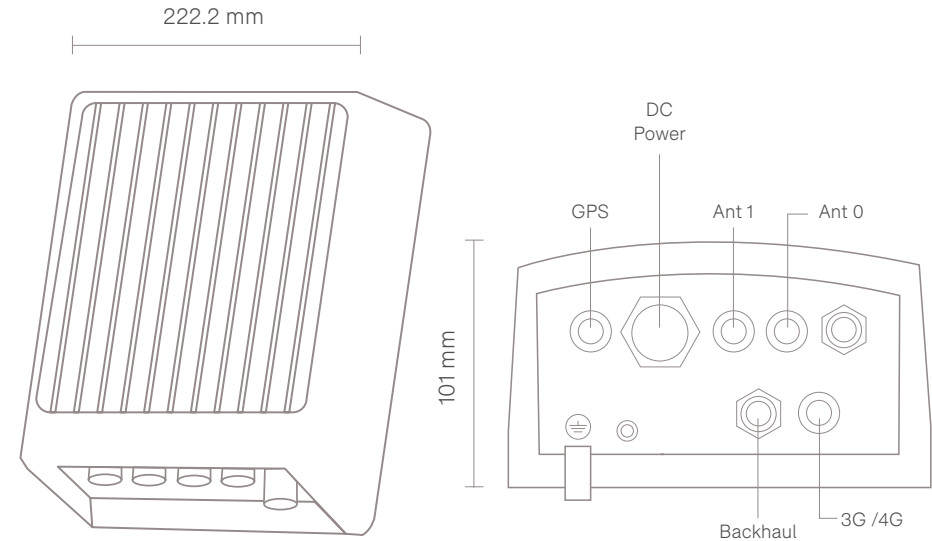
HARDWARE SPECIFICATIONS

DIMENSIONS & WEIGHT

222.2mm x 267.6mm x 101mm, 5kg

EXTERNAL ANTENNA OPTIONS:

3db, 5db, 8db



For EU868, AS923 and other international deployments, please contact info@MachineQ.com for more details.