

# Urb-IoT Outdoor Edge Gateway + Network server



**urb-IoT** Outdoor gateway with edge computing and global connectivity to enable flexible and scalable deployment of **LoRaWAN®**, **BLE** and **Wi-Fi** IoT objects anywhere

Robust, reliable connectivity is critical to the success of IoT solutions. Companies that take control over geographically dispersed fixed and mobile assets, gain a significant competitive advantage by using data to improve operations and take informed decisions.

## WHY CHOOSE A HYBRID DEVICE?

It offers a **global, wireless and reliable connectivity** thru a combination of Wi-Fi, Global Cellular, Iridium Satellite networks and GPS tracking capabilities.

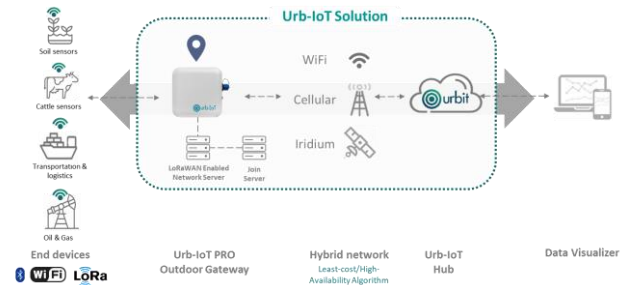


## CHARACTERISTICS

- Multiple Backhaul Connectivity:** Wi-Fi, Global Cellular and Iridium Satellite Network, using least-cost routing and maximum availability
- Edge computing:** Process data locally to reduce data transmission, cloud processing and storage costs
- Cloud connectivity:** Your data is secure and accessible globally
- IP68 Rating:** Outdoor Deployment, capable of resisting the harshest environmental factors
- Feature-rich:** Handles multiple devices via LoRaWAN®, Wi-Fi and/or BLE
- Autonomous:** Long-lasting rechargeable battery, up to 4 days\* of battery life, charged by an external power source

## IDEAL FOR:

- Transportation & logistics
- Oil & Gas
- Smart farming
- Smart agriculture



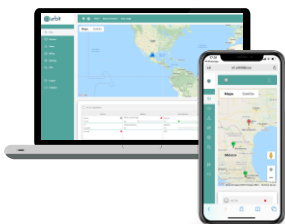
## BENEFITS:

- Fully integrated and internal antennas: GPS, Cellular, LoRa, Iridium, BLE, Wi-Fi
- Global LoRaWAN® frequencies, with up to 15km wide coverage in rural areas
- GPS tracking coverage anywhere in the world
- Add a solar panel to allow stand-alone installation in rural or remote locations





## Urbit Management Center - Remotely configure, manage and control your urb-IoT



- **Dashboard:** Monitor all your gateway(s) health (battery, network status, location)
- **Data Usage:** Control and monitor gateway(s) cellular and satellite data usage
- **Airtime:** Activate and add airtime 24/7
- **Map:** Locate any connected gateway(s) on the map
- **User administration:** Add users and manage permissions
- **Send commands:** Add sensors, send messages, change reporting interval and reset your gateway

## TECHNICAL SPECIFICATIONS

CONNECTIVITY	
Satellite Network	Iridium - Global pole-to-pole
Cellular Network	Dual Mode LTE-M/NB-IoT
GPS Antena	UMTS   HSPA: 800/850, 900, AWS1700, 1900, 2100 MHz
Bluetooth	Bluetooth/BLE 4.2
GNSS	GPS, GLONASS, Beidou, Galileo
LoRaWAN®	Supported Regions: RU864/IN865/EU868 /AU915/US915/KR920/AS923. Class A, B & C
Wi-Fi	802.11 b/g/n

PHYSICAL SPECIFICATIONS	
Dimensions	6.3in x 7.0in x 2.21in (16cm x 17.8cm x 5.6cm)
Weight	29.28oz (830g)
Certification	IP68 Dust & Water-resistant

ENVIRONMENTAL SPECIFICATIONS	
Operating Temp. Range	-40° C a +70° C
Storage Temp. Range	-50° C a +85° C

POWER	
Power input	USB-C IP68 connector, 5.4 - 13.5 V, 1 A
Battery life	72+ Hours

### Contact us:

URBIT GROUP LLC  
 401 East Sonterra Blvd. Suite 375  
 SAN ANTONIO, TX 78258 US  
[www.urbit.us](http://www.urbit.us)  
[info@urbit.us](mailto:info@urbit.us)  
 +1 210.343.2170



U.S. Patent Pending